

APRIL
2019

Knowsley Supported Employment

E-NEWSLETTER



Knowsley Empower **UPDATE**

The Empower Job Carving programme is proving to be a great success. All Saints Catholic High School, Eastcroft Park Primary School and First Ark all used the process of job carving to create job roles within their organisations for people with learning difficulties and/or disabilities.

Each role started as a work experience placement. All three trainees have completed their work placements and their roles have successfully progressed into paid positions. Congratulations to **Liam** (Print Room Assistant) at All Saints Catholic High School, **David** (Post & Provisions Assistant) at First Ark and **Daryl** (Grounds Maintenance Assistant) at Eastcroft Park Primary School.

Media students in their final year at LJMU, Ben Cain and Emily Grannon, are making a short documentary about the programme that will help promote the concept of job carving to other organisations and encourage more businesses to get involved.



KELSEY'S STORY

Kelsey started on Knowsley's first Supported Internship programme in September 2016. Her placement was with the Business Support team at Knowsley Council. The team developed the role for her placement using the process of job carving.

Originally, six members of staff, on a rota basis, had responsibility within their duties to deliver incoming post to different departments within the Council. They were also responsible for collecting and franking outgoing post and updating the post spreadsheet.

An 18-hour a week role was job carved to include the above post duties. Other duties included disposing of confidential waste and preparing paper-based information into batches ready to be digitised. This freed up the rest of the team to concentrate on more complex duties.

When Kelsey completed her internship, she was offered a paid position and has now been with the Council for nearly 3 years. During this time, Kelsey has grown in confidence and is a valued member of the team.

Kelsey said:

"I love my job in Business Support. I used to be shy but I am much more confident now. I have made many friends and talk to lots of staff when I deliver their post. I love getting up and going to work every day - it's great being part of the Business Support team."



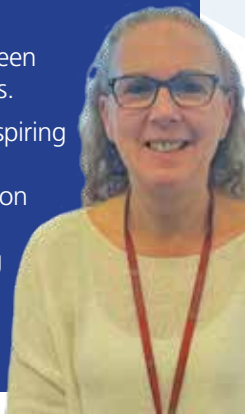
NEW BUSINESSES ON BOARD

Knowsley's Supported Employment Co-ordinator, Sue Temple-Fielding, has met with Caring Connections, St Joseph the Worker Catholic Primary School and The Leather Satchel Company to explore how job carving could benefit their business and offer an employment opportunity for a person with a learning difficulty and or disability.

All three organisations can see the advantages of this approach and are in the process of analysing different tasks within their organisations that can be carved to create a new employment opportunity for a person with a learning difficulty and or disability. Once the roles have been created, Knowsley Council will produce job placement specifications in easy read and video format for potential candidates and a Job Coach will support the successful candidate who takes up the position.

Free disability awareness training has been offered to staff within the organisations.

Sue Temple-Fielding said: "It is really inspiring that all three organisations can see the benefits of job carving and have come on board to offer a position within their organisations - it is great to be working with forward thinking organisations who can offer these much needed employment opportunities."



For further information please contact

Sue Temple-Fielding, Supported Employment Co-ordinator on 0151 443 3054 or 07976 582 255

or email susan.temple-fielding@knowsley.gov.uk



Knowsley Council