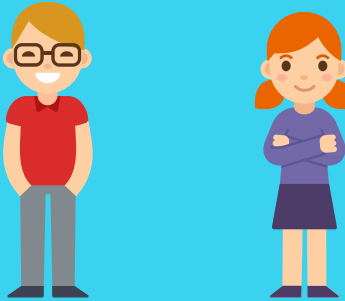


Key statistics on children with SEND 2019

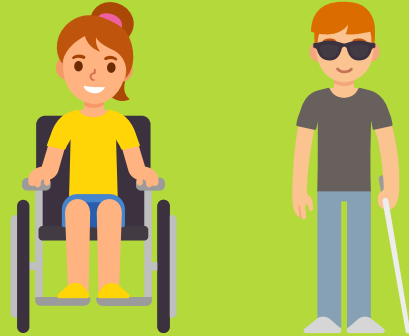
1



18.9% of children have SEND

Knowsley has the 6th highest rate of SEND in England

2



4.2% of children have an EHCP

The numbers of children with an Education, Health and Care Plan are increasing each year in Knowsley.

This is a total of 865 children in Knowsley schools.

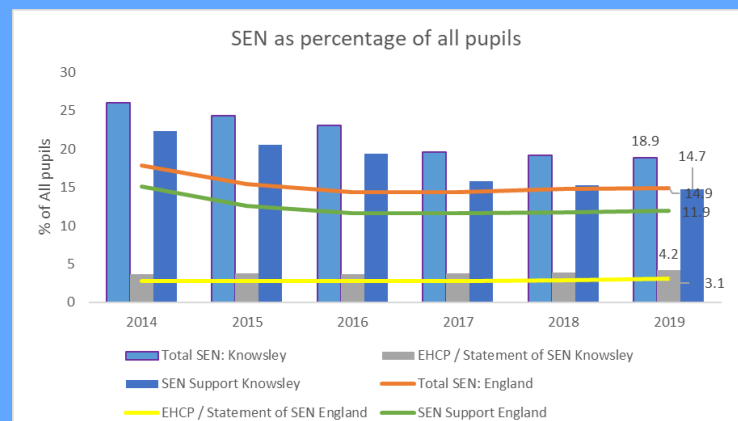
3



14.7% of children receive SEN Support

3,879 children in Knowsley schools receive SEN support. This number has fallen from 26% in 2014

4



5



42% of children with SEN have MLD

Rate of Moderate Learning Difficulties remains high, at primary school rate at 42.4% (976 children from 1031 in 2018), and at secondary 45.5% (427 children from 431 in 2018).

The number of children with SEND have fallen in Knowsley

Although still above the national average, there has been a steady decline in the total number of children with SEND